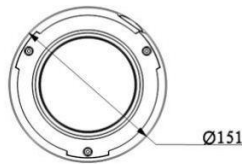
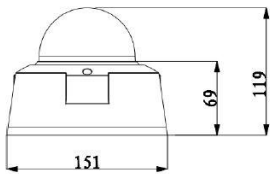




FEATURES

- 1/3" 3Megapixel progressive scan Aptina CMOS
- Support H.264/MJPEG dual codec
- Smart triple streams supported
- Max 25/30fps@3MP(2048x1536)
- Ultra WDR (Wide Dynamic Range) up to 120dB
- Ultra 3D DNR
- Ultra Defog, ROI, EIS
- Smart IR technology
- Smart detection:
- Face detection
- Tripwire detection
- Intrusion detection
- Scene change detection
- 3-9mm varifocal motorized lens
- Max. IR LEDs length 20m (HDBW8301-Z)
- Micro SD memory, IP66, IK10, PoE,

DIMENTION



SPECIFICATION

Camera		
Image Sensor	1/3" 3Megapixel Aptina CMOS	
Effective Pixels	2048(H)x1536(V)	
Scanning System	Progressive	
Electronic Shutter Speed	Auto/Manual, 1/3-1/10000s	
Min. Illumination	Color: 0.1Lux/F1.2, B/W: 0.01Lux/F1.2	
S/N Ratio	More than 50dB	
Video Output	1 Port	
Camera Features		
Max. IR LEDs Length	30m	
Day/Night	Auto(ICR)/Color/B/W	
Backlight Compensation	BLC / HLC / WDR (120dB)	
White Balance	Auto	
Gain Control	Auto/Manual	
Noise Reduction	3D	
Privacy Masking	Up to 4 areas	
EIS	Support	
Ultra Defog	Support	
Lens		
Focal Length	3-9mm motorized	
Max Aperture	F1.4	
Focus Control	Auto	
Angle of View	H: 85.6°(Wide)-28.6°(Tele)	
Lens Type	Motorized/Auto Iris(DC)	
Mount Type	Board-in Type	
Video		
Compression	H.264/MJPEG	
Resolution	3M(2048× 1536)/1080P(1920× 1080)/720P(1280× 720)/D1(704× 576/704× 480)/CIF(352× 288)	
Frame Rate	Main Stream	3M/1080P/720P(1 ~ 25/30fps)
	Sub Stream	D1/CIF(1 ~ 25/30fps)
	Third Stream	1080P/720P/D1(1 ~ 25/30fps)
Bit Rate	H.264: 32K ~ 8192Kbps	
ROI	Up to 4 areas	
Audio		
Compression	G.711a/ G.711u/ PCM	
Interface	1/1 channel In/Out	
Smart Function		
Smart detection	Tripwire	
	Intrusion	
	Scene change	
	Missing/Abandoned	
	Audio detect	
	Face detect	
Network		
Ethernet	RJ-45 (10/100Base-T)	
Wi-Fi	N/A	
Protocol	IPv4/IPv6, HTTP, HTTPS, SSL, TCP/IP, UDP, UPnP, iCMP, IGMP, SNMP, RTSP, RTP, SMTP, NTP, DHCP, DNS, PPPoE, DDNS, FTP, IP Filter, QoS, Bonjour,	
ONVIF	ONVIF , PSIA .CGI	
Max. User Access	20 users	
Smart Phone	iPhone, iPad, Android, Windows Phone	
Auxiliary Interface		
Memory Slot	Micro SD, Max 64GB	
RS485	N/A	
Alarm	1/1 channel In/Out	
PIR Sensor Range	N/A	
General		
Power Supply	DC12V (AC 24V optional), PoE (802.3af)	
Power Consumption	Max 12W(IR on:+2W)	
Working Environment	-20°C~+60°C , Less than 95% RH	
Ingress Protection	IP66	
Vandal Resistance	IK10	
Dimensions	Φ151mm× 119mm	
Weight	1.25kg	

