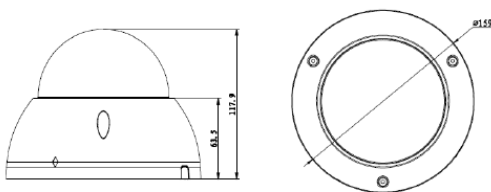




FEATURES

- 1/2.7" 2Megapixel progressive scan CMOS
- Support H.264&MJPEG dual codec
- 25/30fps@1080(1920× 1080)
- Smart Detection supported
- WDR(Wide Dynamic Range),Day/Night IR Filter/Auto (ICR),3DNR,AWB,AGC,BLC
- Multiple network monitoring: Web viewer, CMS(DSS/SmartPSS/PSS) & DMSS
- 2.7mm ~12mm motorized lens
- Max. IR LEDs Length 50m
- Micro SD, Max 128GB
- DC12V, PoE , IP67, IK10

DIMENTION



SPECIFICATION

Model	IPC-HDBW5221E-Z	
Camera		
Image Sensor	1/2.7" 2Megapixel progressive scan Exmor CMOS	
Effective Pixels	1920(H)×1080(V)	
Scanning System	Progressive	
Electronic Shutter Speed	Auto/Manual, 1/3(4)-1/10000s	
Min. Illumination	0. 01Lux/F1.4 (Color), 0Lux/F1.4(IR on)	
S/N Ratio	More than 50dB	
Video Output	1Port	
Camera Features		
Max. IR LEDs Length	50m	
Day/Night	IR Filter / Auto (ICR) / Color / BW	
Backlight Compensation	BLC / HLC / WDR (120dB)	
White Balance	Auto/Sunny/Night/Outdoor/Customized	
Gain Control	Auto/Manual	
Noise Reduction	3D	
Privacy Masking	Up to 4 areas	
Lens		
Focal Length	2.7mm~12mm	
Max Aperture	F1.4	
Focus Control	Motorized	
Angle of View	H: 99°~34°	
Lens Type	Motorized/ Auto Iris(DC)	
Mount Type	Board-in Type	
Video		
Compression	H.264/ H.264H/H.264B/ MJPEG	
Resolution	1080P(1920×1080)/1.3M(1280×960)/720P(1280×720)/D1(704×576/704×480) /CIF(352×288/352×240)	
Rate	Main Stream	1080P/720P(1 ~ 25/30fps)
	Sub Stream	D1/CIF(1 ~ 25/30fps)
	Third Stream	1080P/720p(1-25fps)
Bit Rate	H.264: 32K ~ 10Kbps	
Corridor Mode	Support	
Audio		
Compression	G.711a/ G.711u/ AAC	
Interface	1/1 channel In/Out	
Smart Function		
Smart detection	Tnpwire/Intrusion/Abandoned/Missing/Scene Change/Audio detect/Face detect	
Motion Detector	Auto/Manual	
Network		
Ethernet	RJ-45 (10/100Base-T)	
Wi-Fi	N/A	
Protocol	IPv4/IPv6, HTTP, HTTPS, SSL, TCP/IP, UDP, UPnP, ICMP, IGMP, SNMP, RTSP, RTP, SMTP, NTP, DHCP, DNS, PPPOE, DDNS, FTP, IP Filter, QoS, Bonjour, 802.1x	
ONVIF	ONV1,PSIA,CGI	
Max. User Access	20 users	
Smart Phone	iPhone, iPad, Android, Windows Phone	
Auxiliary Interface		
Memory Slot	Micro SD, Max 128GB	
RS485	N/A	
Alam	1/1 channel In/Out	
PIR Sensor Range	N/A	
General		
Power Supply	DC12V(AC24V optional), PoE (802.3af)	
Power Consumption	Max 10W (with IR on, motorized lens working)	
Working Environment	-30°C~+60°C, Less than 95% RH	
Ingress Protection	IP67	
Vandal Resistance	IK10	
Dimensions	Φ 159mm×117.9mm	
Weight	0.8Kg	

