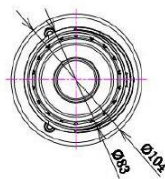
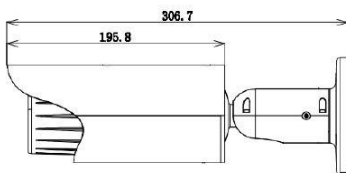




FEATURES

- 1/2.5" 5Megapixel progressive scan Exmor CMOS
- H.264 & MJPEG dual-stream encoding
- Max 12fps@5M(2560× 1920)&25/30fps@1080P(1920× 1080)
- DWDR, Day/Night(ICR), 3DNR, Auto Iris, AWB, AGC, BLC
- Multiple network monitoring: Web viewer, CMS(DSS/Smart PSS) & DMSS
- 4~9mm vari-focal motorized lens
- 2/1 alarm in/out
- Max. IR LEDs length 30m
- Micro SD memory, IP66, PoE

DIMENTION



SPECIFICATION

| Camera | |
|--------------------------|-----------------------------------------------------------------------------------------------------------------------------------------------|
| Image Sensor | 1/2.5" 5Megapixel CMOS |
| Effective Pixels | 2560(H)x1920(V) |
| Scanning System | Progressive |
| Electronic Shutter Speed | Auto/Manual, 1/3(4)-1/10000s |
| Min. Illumination | Color: 0.01Lux/F1.6; 0Lux/F1.6(IR on) |
| S/N Ratio | More than 50dB |
| Video Output | 1 channel BNC (1.0Vp-p, 75Ω) |
| Camera Features | |
| Max. IR LEDs Length | 30m |
| Day/Night | Auto(ICR)/Color/B/W |
| Backlight Compensation | BLC / HLC / DWDR |
| White Balance | Auto |
| Gain Control | Auto/Manual |
| Noise Reduction | 3D |
| Privacy Masking | Up to 4 areas |
| Lens | |
| Focal Length | 4~9mm motorized |
| Max Aperture | F1.6 |
| Focus Control | Auto |
| Angle of View | H: 82.4°~36.1° |
| Lens Type | Motorized / Auto Iris(DC) |
| Mount Type | Board-in Type |
| Video | |
| Compression | H.264/MJPEG |
| Resolution | 5M(2560× 1920)/3M(2048× 1536)/1080P(1920× 1080)/720P(1280× 720) / D1(704× 576) / CIF(352× 288) / |
| Frame Rate | Main Stream 5M(1~12fps)/3M(1~20fps)/1080P/720P(1 ~ 25/30fps) Sub Stream D1/CIF(1 ~ 25/30fps) |
| Bit Rate | H.264: 32K ~ 8192Kbps |
| Audio | |
| Compression | G.711a/ G.711u/ PCM |
| Interface | 1/1 channel In/Out |
| Network | |
| Ethernet | RJ-45 (10/100Base-T) |
| Wi-Fi | N/A |
| Protocol | IPv4/IPv6, HTTP, HTTPS, SSL, TCP/IP, UDP, UPnP, ICMP, IGMP, SNMP, RTSP, RTP, SMTP, NTP, DHCP, DNS, PPPOE, DDNS, FTP, IP Filter, QoS, Bonjour, |
| ONVIF | ONVIF,PSIA,CGI |
| Max. User Access | 20 users |
| Smart Phone | iPhone, iPad, Android, Windows Phone |
| Auxiliary Interface | |
| Memory Slot | Micro SD, Max 64GB |
| RS485 | N/A |
| Alarm | 2/1 channel In/Out |
| PIR Sensor Range | N/A |
| General | |
| Power Supply | DC12V (AC 24V optional), PoE (802.3af) |
| Power Consumption | <8.5W |
| Working Environment | -30°C~+60°C (-H: -40°C~+60°C) , Less than 95% RH |
| Ingress Protection | IP66 |
| Vandal Resistance | N/A |
| Dimensions | Φ104mm× 306.7mm |
| Weight | 1.25kg |

